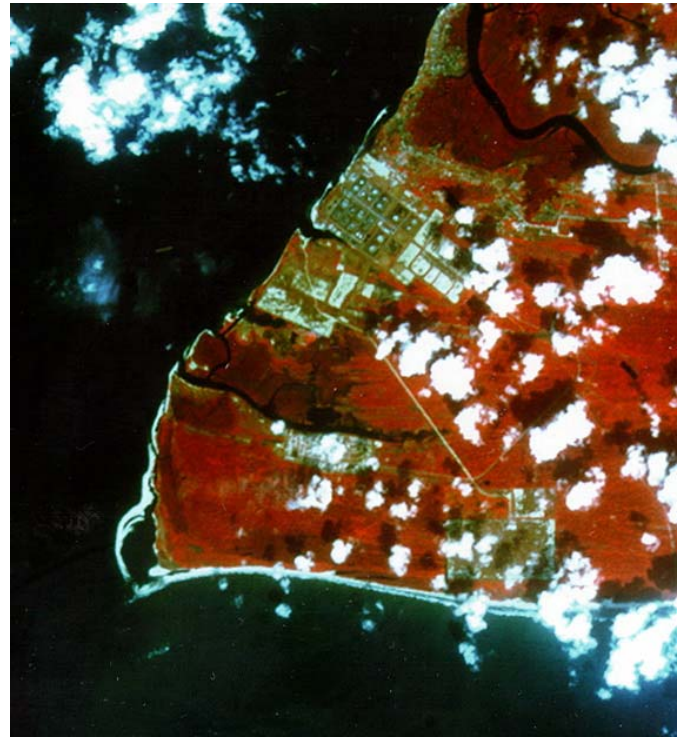


1986



1994

Nigeria LNG Export Terminal

For the export of gas, Nigeria LNG has developed a terminal on the left bank of Bonny River between Bonny Town and the ocean corner. The works include a loading jetty for large LNG-carriers and a jetty for material off loading, tug boats and passenger ferries in Bonny River.

The facilities were designed in 1996 and completed in 1998. In 2001 the facilities were extended by a second LNG loading jetty.

The following services were provided:

- hydrographic surveys (topography, bathymetry, currents, waves, sediments)
- 2D numerical modelling of currents, waves and sediment transport (FINEL 2D)
- satellite imagery analysis on shoreline development
- analysis of maintenance dredging volumes
- determination of mooring loads (TERMSIM)
- evaluation of navigational procedures
- optimisation of lay out of marine structures

Client
Nigeria LNG (joint venture of NNPC and Shell)

Location
Bonny River, Nigeria

Date
1996 - 1998

Services
Hydrographic surveys and hydraulic design of marine facilities

Svašek Hydraulics

Schiehaven 13G, P.O. Box 91, 3000 AB Rotterdam, The Netherlands.
Phone +31 10 467 13 61, Fax +31 10 467 45 59, Internet: www.svasek.com, E-mail: info@svasek.com

SV992