

# Sea defence Breskens

## Design report

The municipality of Sluis intends to relocate part of the primary sea defence in the village of Breskens in order to restore the city centre. The new sea defence has to meet the legal requirements of Rijkswaterstaat and the Zeeuws-Vlaanderen Waterboard. Svašek Hydraulics was asked to write the design report for this relocation.

The village of Breskens is located in the south-western part of the Netherlands at the entrance of the Western Scheldt. The existing primary sea defence was constructed in 1970 as part of the Delta Act.

To restore the centre of the village the present sea defence will be relocated in a more seaward direction. The blue line in the sketch at the right side indicates the location of present sea defence. The dotted red line the proposed new location. The photo beneath depicts the situation of 2005 during the construction works. Below that, the final result is visible (situation in 2013).

Svašek Hydraulics has written the design report for the relocation of the sea defence. First, after consultation of all parties involved, a list of demands, wishes and boundary conditions has been formulated. With this list several alternatives were developed and each of the alternatives was engineered on a conceptual basis.

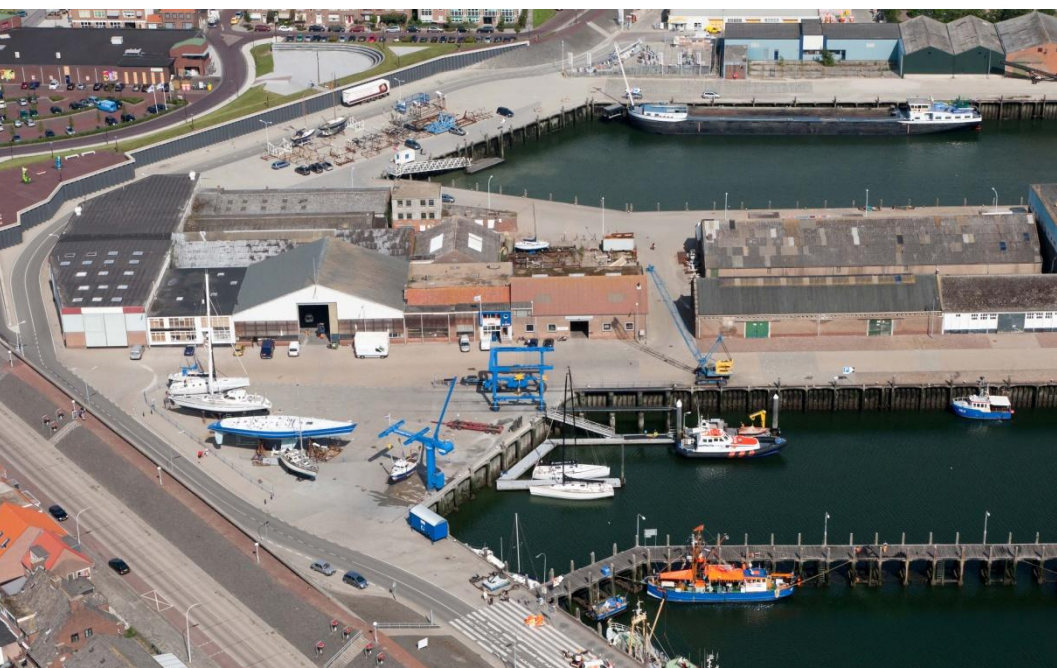
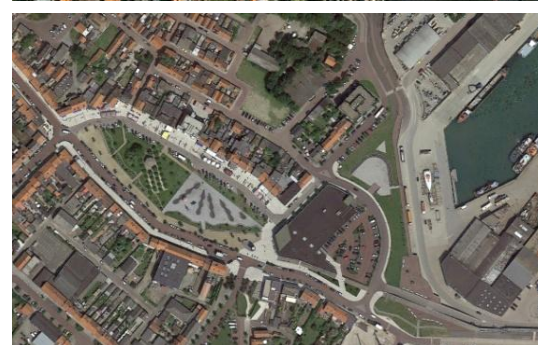
Finally one design was selected in co-operation with the municipality, licensing authorities and city planners. The selected design was engineered in detail.

Client  
Municipal of Sluis

LOCATION  
Breskens, the Netherlands

DATE  
2004

SERVICES  
Design sea defence



**SVASEK**  
**HYDRAULICS**  
COASTAL, HARBOUR AND RIVER CONSULTANTS

Svašek Hydraulics  
Schiehaven 13G  
3024 EC Rotterdam  
the Netherlands

Phone: +31 10 467 13 61  
Internet: [www.svasek.com](http://www.svasek.com)  
E-mail: [info@svasek.com](mailto:info@svasek.com)